



How do I obtain a PETCT Scan?

Your Physician can schedule a PETCT scan

for you by contacting:

Radiology Department SKMCH&RC

Tel: +92 42 35905000 Ext 4143

Fax: +92 42 35180750

UAN: 111 155 555

Email: petct@skm.org.pk



**Shaukat Khanum Memorial Cancer
Hospital and Research Centre**

7-A R 3 Block, Johar Town, Lahore, Pakistan

Tel: +92 42 35905000 UAN: 111-155-555

www.shaukatkhanum.org.pk

RAD1-11OCT09-PIF01

WHAT IS PETCT IMAGING?



**Shaukat Khanum Memorial Cancer
Hospital and Research Centre**

What is PETCT imaging?

Computed Positron Emission Tomography (PETCT) is a powerful, yet painless, imaging technique for the diagnosis and treatment of many diseases particularly cancer.

A non invasive test PETCT accurately captures images of the human body in a single scan. PETCT provides a complete picture making it easier for your physician to diagnose problems, determine the extent of disease, prescribe treatment and track progress.

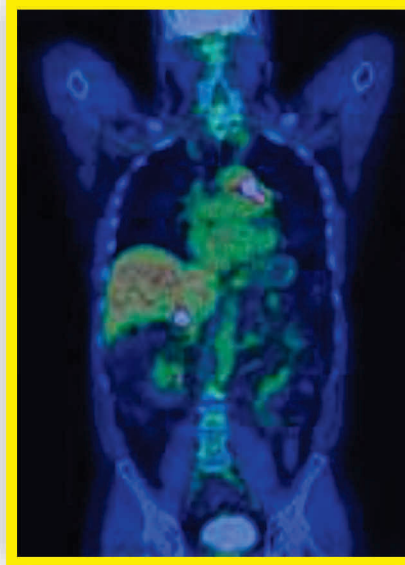
Monitoring

The most advanced imaging technique available for finding cancer any where in the body

Why have a PETCT Scan?

PETCT provides information about the body's chemistry that is not available with other imaging techniques

- ❖ Reveals important metabolic information. Provides your doctor with lifesaving insight.
- ❖ Often reveals illnesses much earlier than conventional diagnostic procedures.
- ❖ Eliminates the need for ineffective or unnecessary surgeries, treatment or other diagnostic tests, significantly reducing medical costs.



Is it safe?

The amount of radioactivity used in PETCT scanning is small and the time that it is active in the body is very short. Patients may safely have PETCT Scans on a periodic basis to monitor therapy or recurrence of disease.

How does it Work?

A PETCT scan is completely painless with no side effects. PETCT images begin with an injection of FDG, an analogue of glucose. Metabolically active organs or tumor consumes sugar at higher rate, and as the tagged sugar starts to decay, it emits positrons. These positrons then collide with electrons, giving off Gamma Rays, and a computer converts the gamma rays into images. These images reveal metabolic "hot spots" which often indicate a rapidly growing tumor.

The entire examination usually takes less than 30 minutes (excluding preparation prior to it which takes about an hour) providing comprehensive diagnostic information to your healthcare team very quickly. The PETCT system provides exceptional image quality and accuracy of diagnostic information.

How to prepare for a PETCT Scan

Do not consume carbohydrates at least 12 hours prior; eat 'protein only' meals the night before. Do not consume alcohol, tea, coffee, cola drinks or smoke cigarettes at least 12 hours prior. No food for at least six hours prior to your scan. You may drink plain water. Pregnancy is a contraindication for this test. Wear comfortable clothing. Discuss about your routine medication prior to scan.

